

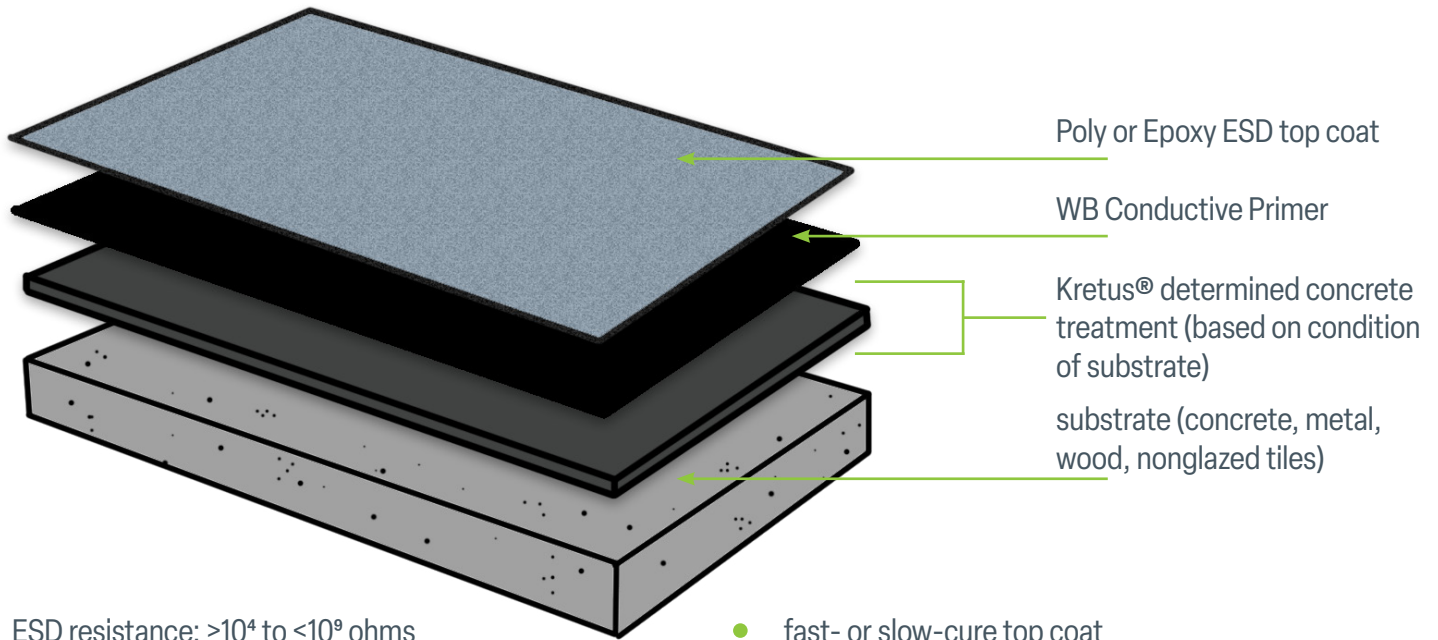


ESD SYSTEMS

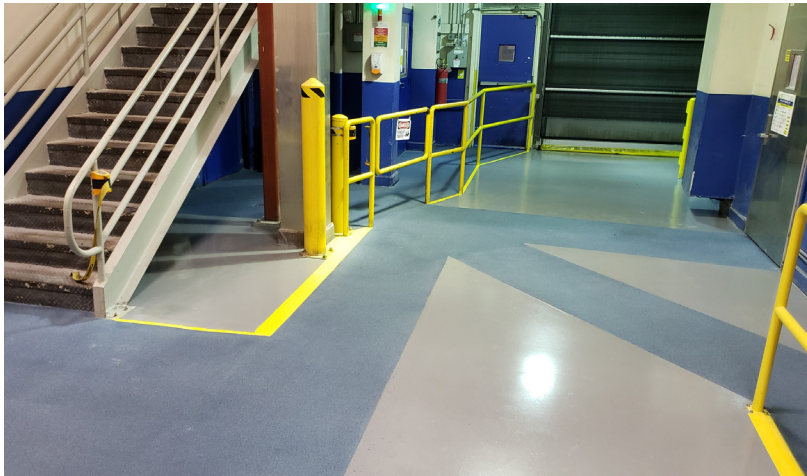
Take Control of Static

TRADITIONAL ESD *systems*

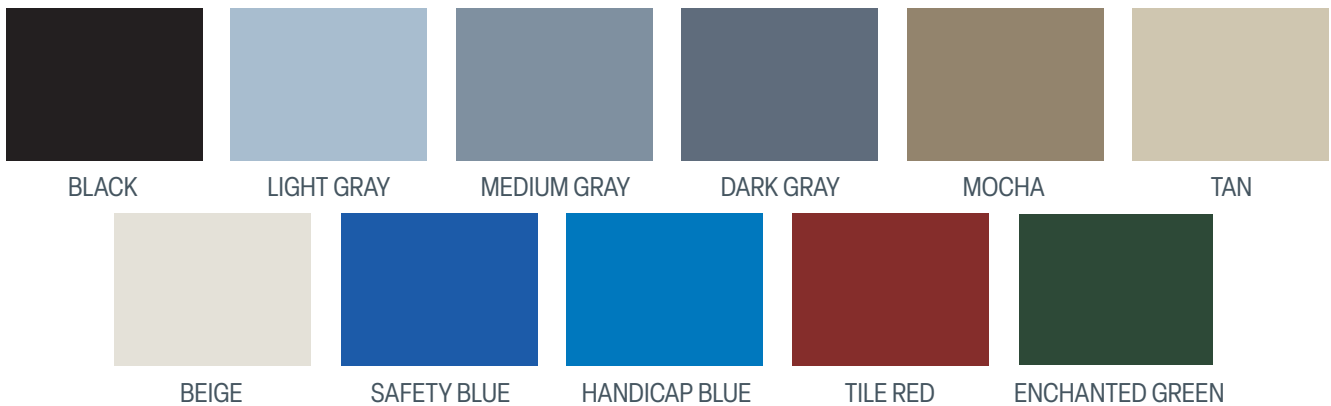
Shield employees, equipment, and processes against harmful ESD (electrostatic discharge) with **KRETUS® TRADITIONAL ESD**. This two-coat system protects against heavy traffic, chemical spills, moisture intrusion, and microbial growth, all while maintaining its ESD properties. Based on the underlying substrate treatment, it can be installed as a high-build system with no effect on resistance readings.



- ESD resistance: $>10^4$ to $<10^9$ ohms
- components sold separately for maximum flexibility
- eleven colors
- fast- or slow-cure top coat
- UV-resistant (Poly) or economical (Epoxy) options
- strong adhesion to epoxy, urethane cement, or sand



COLOR CHART



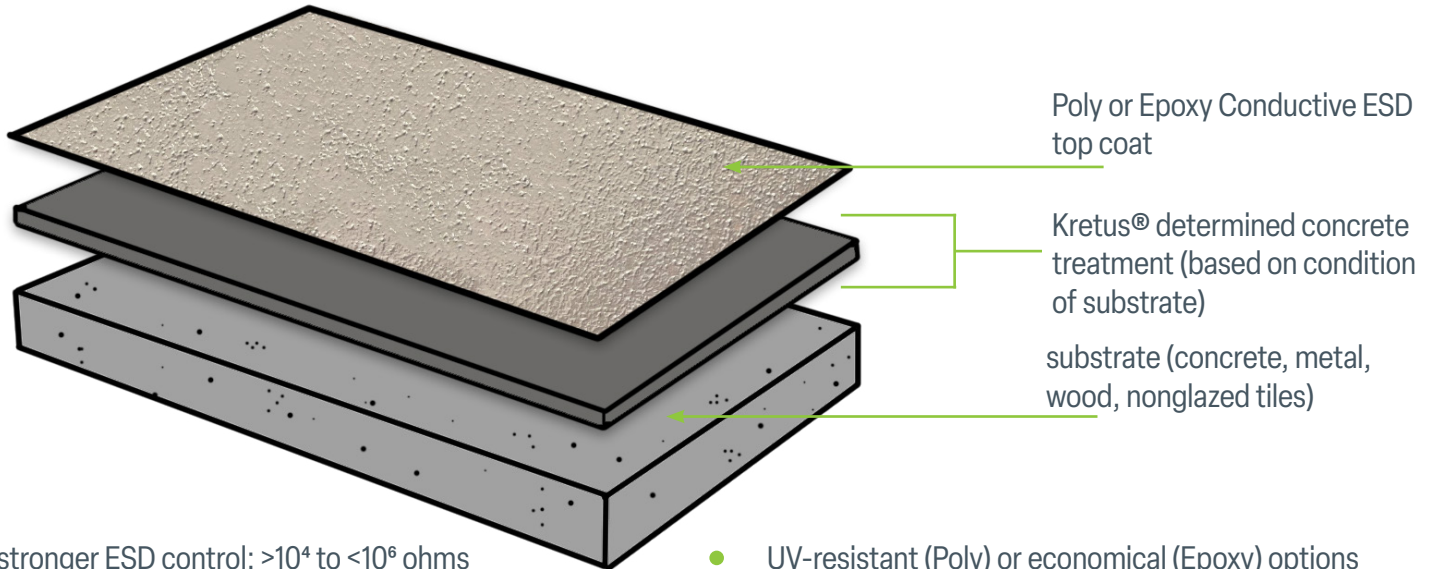
Colors shown are approximate.

NANOTUBE ESD *systems*

Get all the benefits of the traditional ESD system—and more—in a single application! **KRETUS® NANOTUBE ESD** incorporates carbon nanotube technology to enhance wear resistance and strengthen ESD control. Select the Epoxy for ease of installation or choose Poly for even better durability, wear resistance, and color stability.

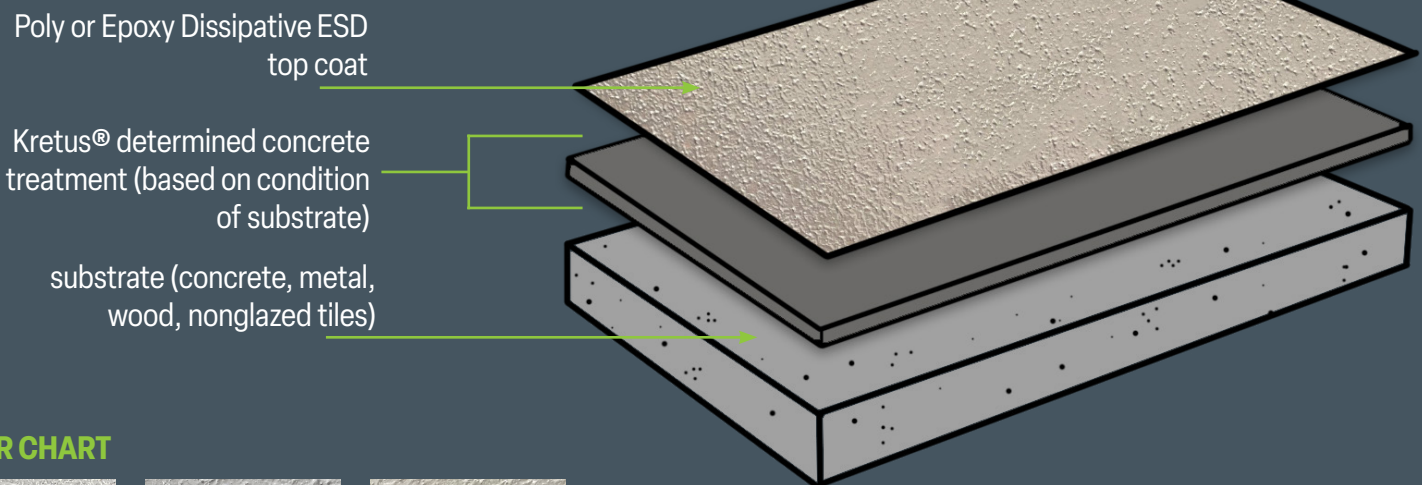


Poly or Epoxy CONDUCTIVE System



- stronger ESD control: $>10^4$ to $<10^6$ ohms
- components sold as a boxed kit for maximum control
- six colors
- UV-resistant (Poly) or economical (Epoxy) options
- strong adhesion to epoxy, urethane cement, or sand

Poly or Epoxy DISSIPATIVE System



COLOR CHART



Colors shown are approximate.

- stronger ESD control: $>10^6$ to $<10^9$ ohms
- components sold as a boxed kit for maximum control
- six colors
- UV-resistant (Poly) or economical (Epoxy) options
- strong adhesion to epoxy, urethane cement, or sand

THOUGHTFULLY DESIGNED COATINGS



Our adaptable coatings give skilled contractors the ability to meet client's needs under ever-changing environments, budgets, and deadlines.

Hygienic Walls, Floors & Ceilings For

- Employee Service Facilities
- Freezer & Cold Storage
- Loading Docks
- Maintenance Areas
- Production Floors
- Test Kitchens
- Warehousing
- Wastewater Treatment

Decorative and Functional Systems

- Color Chip
- Color Quartz
- Color Splash
- concrete priming, polishing, and patching
- crack and joint repair
- EcoMagnetic™
- ESD (Static Control)
- Industrial Sand
- moisture mitigation
- Terrazzo
- Top Shelf® Metallic

Water- and Solvent-based Coatings

- Acrylic Polymer Concrete
- Acrylic Sealers
- Aliphatic MC
- EcoMagnetic™
- Hydrothane
- Polyaspartic*
- Polyurethane*
- Top Shelf® Epoxy*
- Urethane Polymer Concrete*
- WB Epoxy*

*modular product lines have mix-and-match components



Scan code for
kretus.com/esd