



KRĒTUS

systems



THOUGHTFULLY DESIGNED COATINGS

THE *world* IS CHANGING: HOW CAN *coatings* KEEP UP?

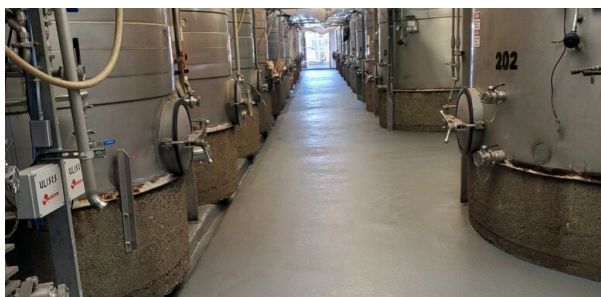
Today's world is unpredictable. Regulations, budgets, environmental conditions, and deadlines shift without warning. That's why we make **high-performance** coatings that adapt to your needs, regardless of the circumstances.

Made in California, USA
Satisfy USDA, FDA, EPA, and SCAQMD VOC Requirements
Meet LEED v4.1 Indoor Air Quality Standards
Increase Protection and Longevity With Premium Options



Kretus Academy for Hands-on Trainings
Watch and Attend Technical Training Videos and Classes
Customize with Unique Colors and Formulations

Kretus THOUGHTFULLY DESIGNED COATINGS



Innovative: Ever Developing New Technologies
Adaptable: Mix-and-Match Product Lines
Fast: Quick Turnaround without Compromising Quality

Contact a **KRETUS®** representative today to see what **amazing** things we can create **together**.

FIND US *online!*



If you're into games, memes, and jobsite pics:
Find us on Instagram, Facebook, and LinkedIn.



For installation tips, tricks, and more:
Subscribe to our newsletter and YouTube channel.



TABLE OF *contents*

Moisture Mitigation.....	4
Color Chip.....	5
Color Quartz.....	6
Metallic.....	7
Color Splash.....	8
Industrial Sand.....	9
EcoMagnetic™.....	10
Cove.....	11
Traditional ESD.....	12
Nanotube ESD.....	13
Waterproofing and Concrete Overlays	14
Color Chart.....	16
Top Coat Applications	18



Scan **QR codes** to learn more about the featured product or system.

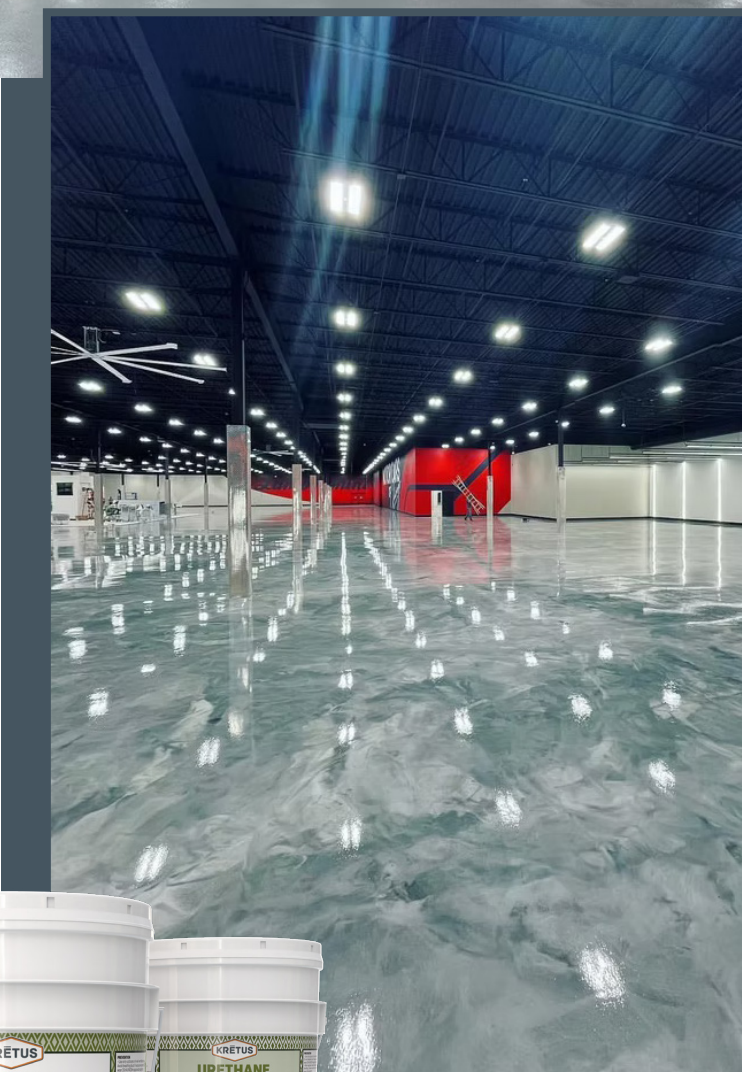


kretus.com/home

MOISTURE *mitigation*



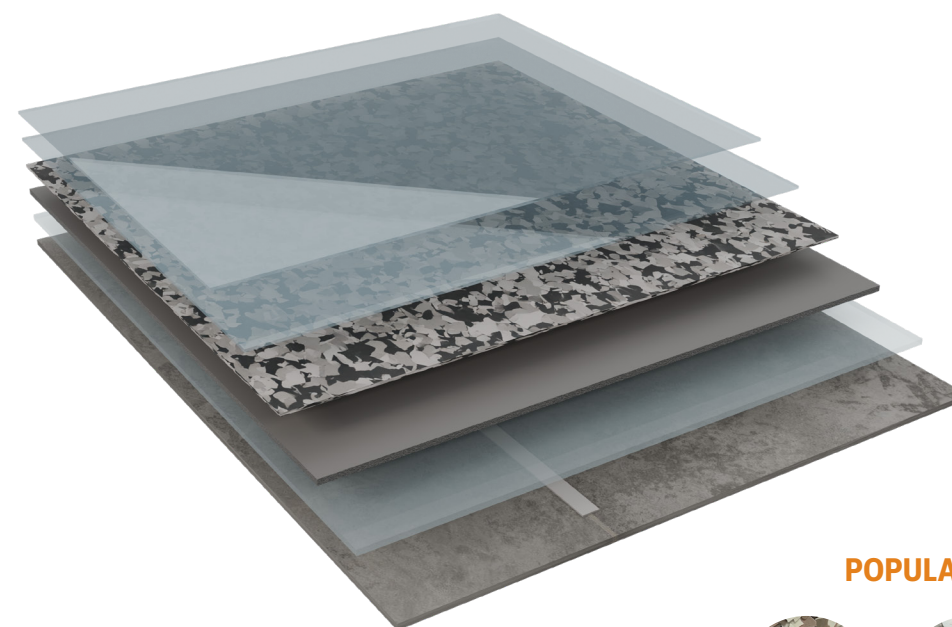
KRETUS® OMG BLOCKER and **URETHANE POLYMER CONCRETE** systems provide seamless moisture protection for facility owners, contractors, and architects. Designed for high-traffic and impact-resistant environments, these low-odor and low-maintenance systems offer moisture vapor resistance up to 25 lbs. Ideal for industrial, healthcare, commercial, government, institutional, and residential applications, Kretus systems deliver durable performance you can trust.



COLOR CHIP *system*

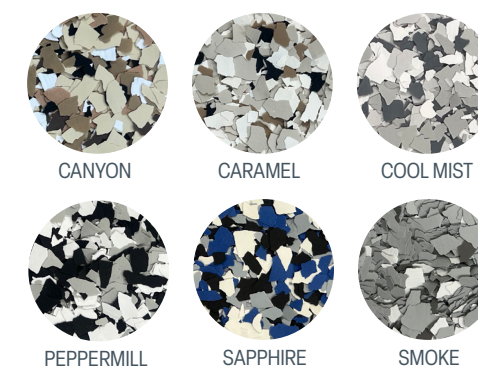


KRETUS® COLOR CHIP SYSTEMS stand up to continuous heavy traffic and are great for high-use spaces. They camouflage day-to-day dust and debris, improve slip resistance, and add vibrant or soft color to any room.



- 6 TOP COAT
- 5 CAP COAT
- 4 COLOR CHIP BROADCAST
- 3 BASE COAT
- 2 OMG BLOCKER
- 1 PROPERLY PREPARED SUBSTRATE

POPULAR COLORS



Colors shown are approximate.

GREAT FOR

- animal facilities
- brand-color matching
- garages
- laboratories
- office spaces



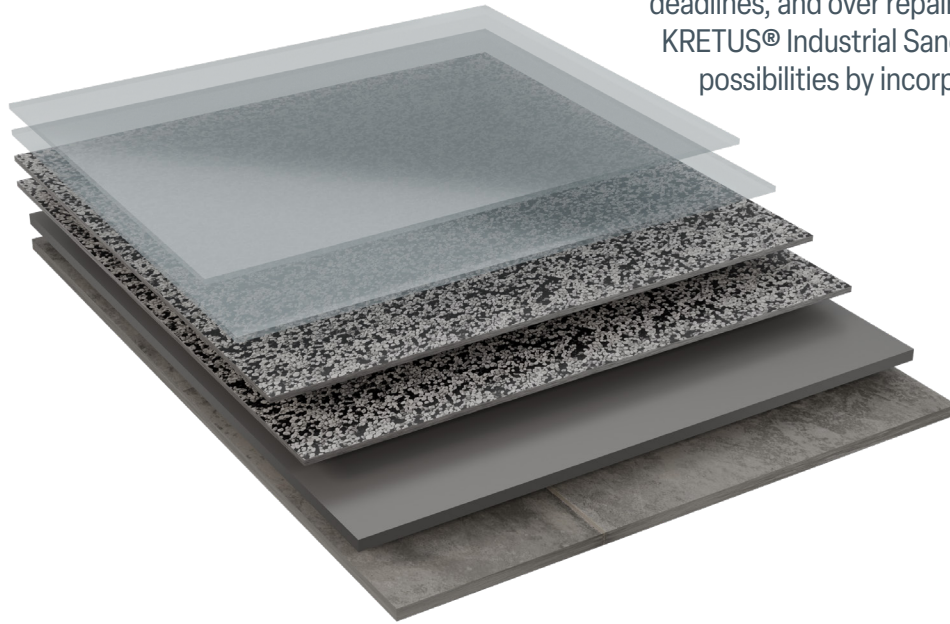
kretus.com/
epoxy-MVR



kretus.com/
color-chip

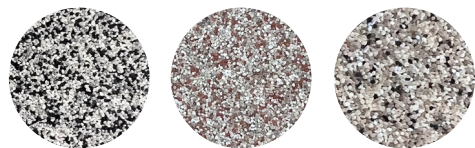
COLOR QUARTZ *system*

Beautiful and exceptionally durable, **KRETUS® COLOR QUARTZ SYSTEMS** offer slip-resistant, hygienic, and easy-to-clean flooring solutions. They can be installed in hot or cold climates, under tight deadlines, and over repaired concrete. While they perform identically to KRETUS® Industrial Sand systems, color quartz offers endless design possibilities by incorporating custom pigmented quartz blends.



- 6 TOP COAT
- 5 CAP COAT
- 4 QUARTZ BROADCAST
- 3 QUARTZ BROADCAST
- 2 OMG BLOCKER
- 1 PROPERLY PREPARED SUBSTRATE

POPULAR COLORS



SALT & PEPPER CINNAMON BISCUIT
Colors shown are approximate.

GREAT FOR

- brand color-matching
- dealership floors
- show kitchens
- sports arenas
- decorative warehouse spaces



kretus.com/
color-quartz



METALLIC *system*

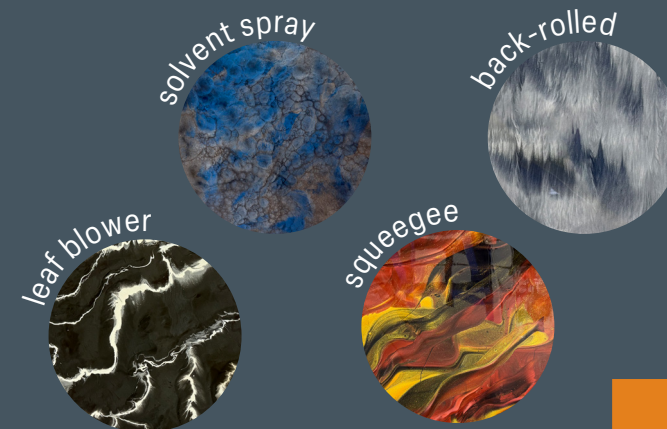


Turn floors into fine art with **KRETUS TOP SHELF® METALLIC SYSTEMS**. These luxurious 3-D systems combine the strength of our Top Shelf® Epoxy, the longevity of Polyurethane HS (High Shine), and the brilliance of reflective glass for a floor that's beautiful, built to last, and easy to clean.

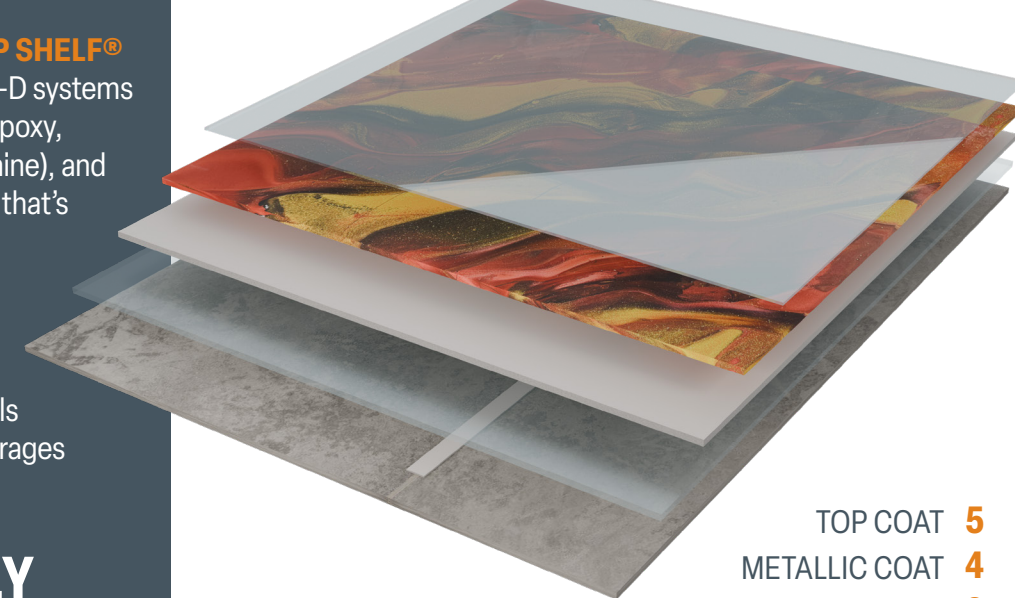
GREAT FOR

- showrooms
- tattoo parlors
- hair salons
- shopping malls
- residential garages

CREATE TRULY *unique* FLOORS



Each floor has an authentic design based on the techniques and artistry of the installer.



- TOP COAT 5
- METALLIC COAT 4
- BASE COAT 3
- OMG BLOCKER 2
- PROPERLY PREPARED SUBSTRATE 1

POPULAR COLORS



DARK GRAY CARBON DARK BLUE
VIOLET JADE GREEN NEW COPPER
Colors shown are approximate.
More options available on page 16.



kretus.com/
metallic

COLOR SPLASH

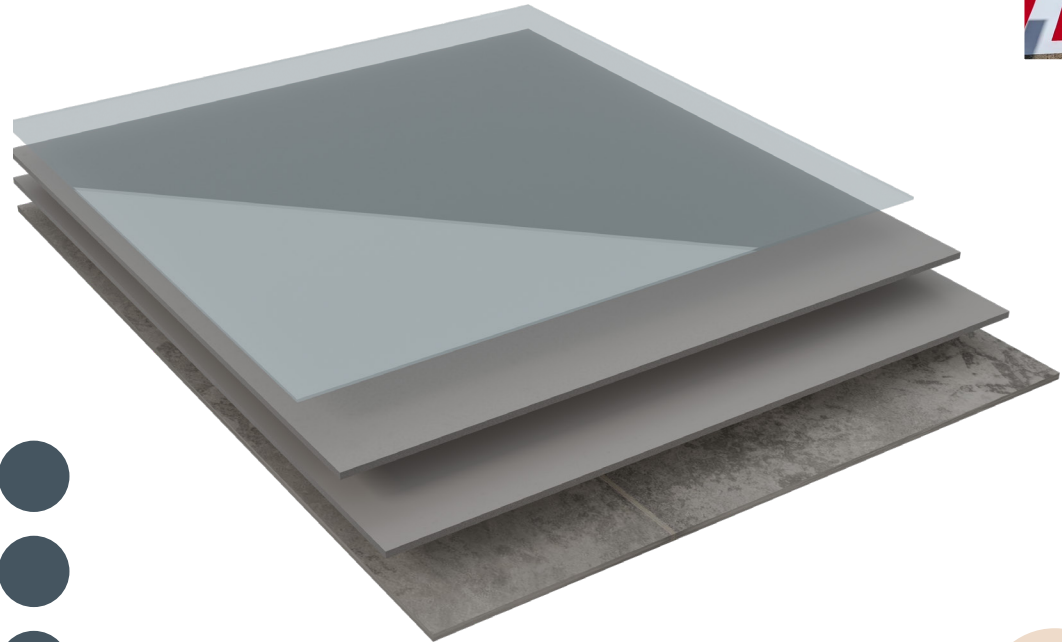
sealer system



Efficient and easy to apply, these systems add a pop of color to architecture restoration projects, interior design, warehouse walls and floors, and more.

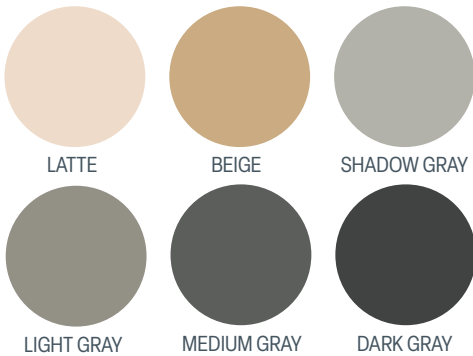
epoxy • acrylic • poly • upc

Enhance a structure's natural color and features in clear gloss or cover walls and floors in warm or cool tones with **KRETUS® COLOR SPLASH SEALER SYSTEMS**. Available in Acrylic, Epoxy, Poly, or UPC (Urethane Polymer Concrete), KRETUS® Color Splash protects concrete, wood, drywall, and masonry from minor scratches, bacterial and fungal growth, UV degradation, and water intrusion in just 3 coats.



- 4 TOP COAT
- 3 BASE COAT
- 2 OMG COAT
- 1 PROPERLY PREPARED SUBSTRATE

POPULAR COLORS



Colors shown are approximate. More options available on page 17.

GREAT FOR

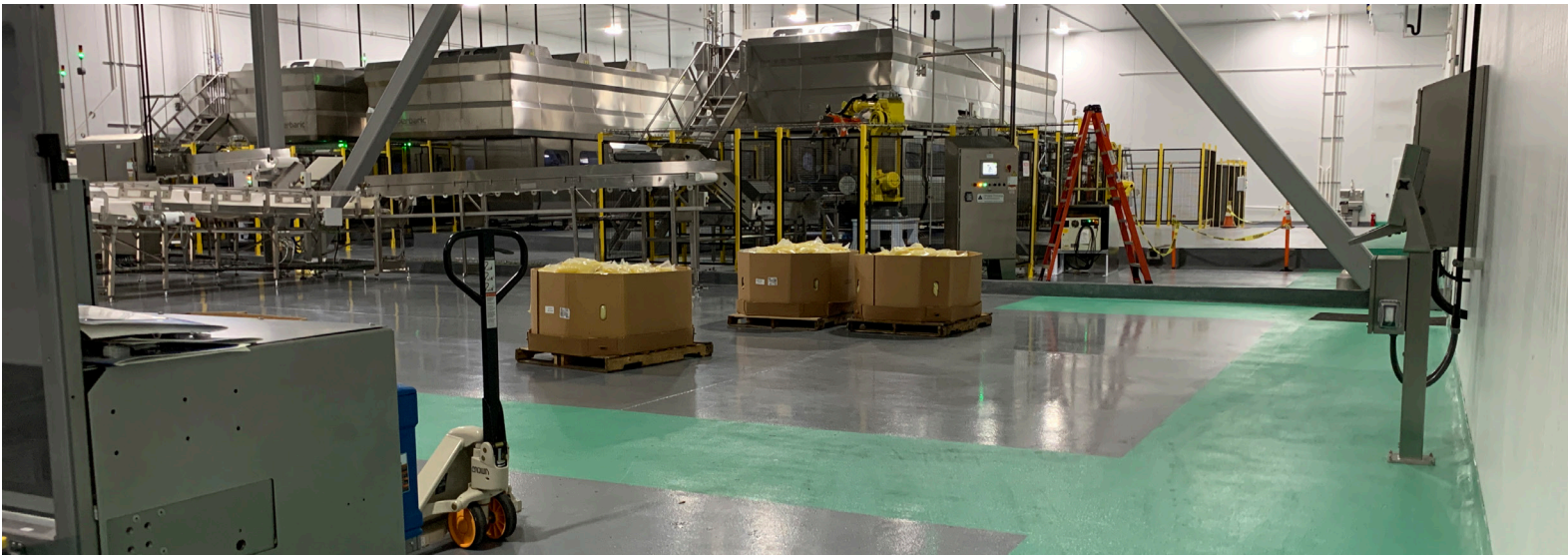
- aircraft hangars
- parking structures and drive aprons
- economical walls and floors
- laboratories
- pool decks



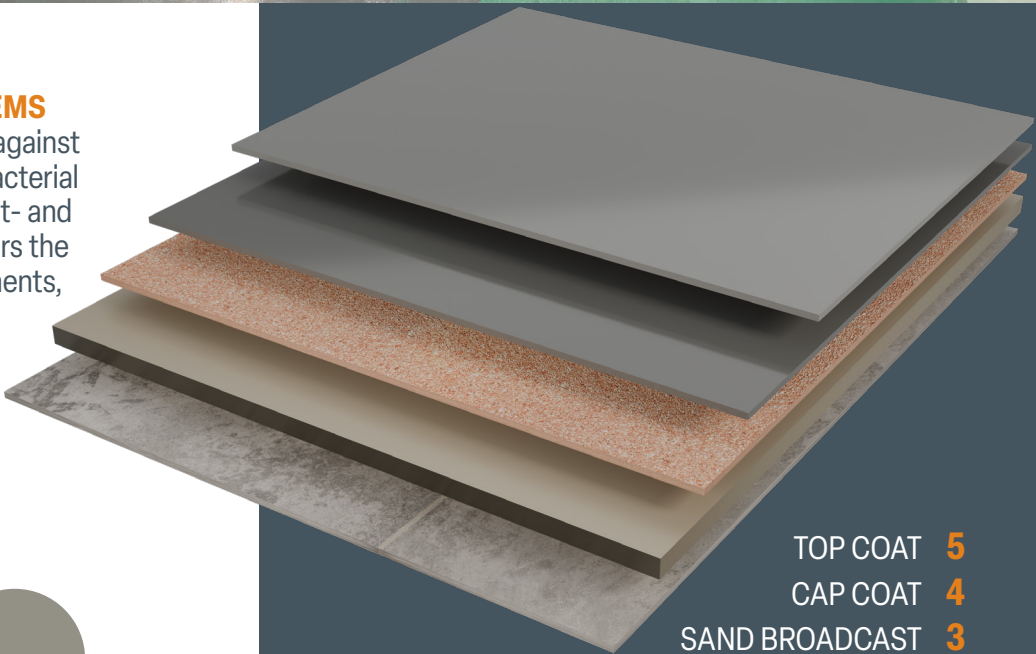
kretus.com/
color-splash

INDUSTRIAL SAND

system



KRETUS® INDUSTRIAL SAND SYSTEMS provide seamless wall-to-floor protection against moisture intrusion, UV degradation, and bacterial and fungal growth. Each system offers fast- and slow-cure options that give skilled installers the ability to take on ever-changing environments, budgets, and deadlines.



- TOP COAT 5
- CAP COAT 4
- SAND BROADCAST 3
- BASE COAT 2
- PROPERLY PREPARED SUBSTRATE 1

POPULAR COLORS



Colors shown are approximate.
More options available on page 17.

GREAT FOR

- food and beverage processing
- heavy-use industrial spaces
- manufacturing and production
- municipal buildings
- water treatment facilities

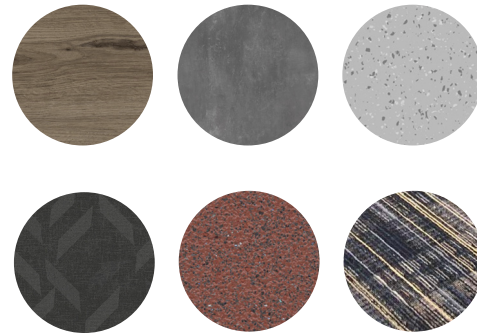


kretus.com/
industrial-sand

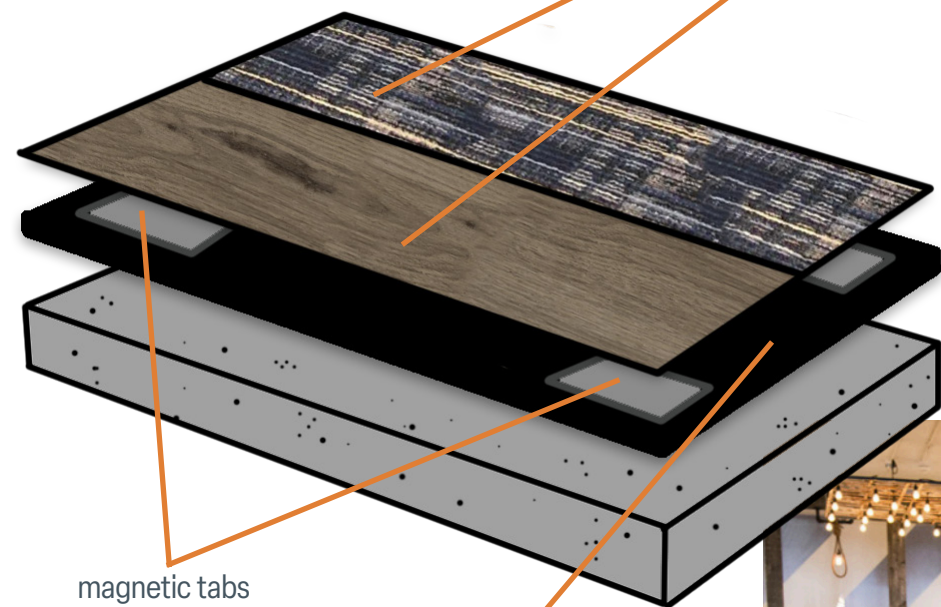
ECOMAGNETIC™ system

Experience the future of tile installation with **KRETUS® ECOMAGNETIC™**—a revolutionary system that eliminates the need for adhesives. The innovative system harnesses the power of magnets, making it incredibly easy to use on nearly any surface. Featuring reusable magnetic tabs that maintain their stickiness, you'll never have to worry about damaging your tiles or leaving behind any residue.

Resilient Tile:
EcoMagnetic™ Tabs can transform non-magnetic flooring such as carpet, LVT, ceramic, timber, or other resilient tiles into magnetic flooring.



Resilient tile shown as example only.
KRETUS® does not manufacture or distribute tile.



magnetic tabs

magnetically receptive coating

GREAT FOR

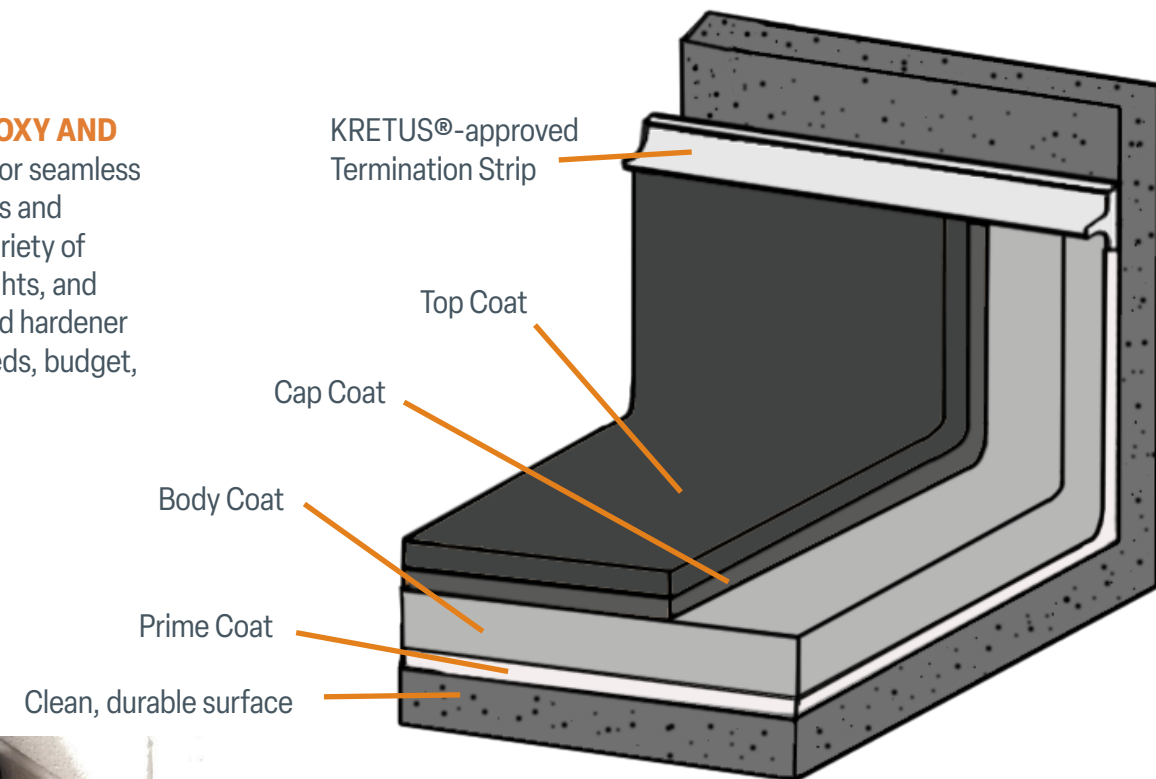
- classrooms and hallways
- cruise lines
- hotel and event venues
- retail/sales floor
- studio and theater spaces



kretus.com/
ecomagnetic

COVE system

Consider **KRETUS® EPOXY AND UPC COVE SYSTEMS** for seamless transitions between walls and floors. They come in a variety of colors, finishes, and heights, and have multiple coating and hardener selections to fit your needs, budget, and timeline.

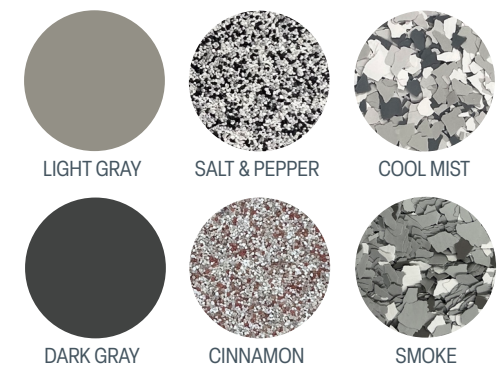


Clean, durable surface

GREAT FOR

- food and beverage processing
- heavy-use industrial spaces
- manufacturing and production
- municipal buildings
- water treatment facilities

POPULAR COLORS



Colors shown are approximate.
More options available on page 16 & 17.



kretus.com/
cove

TRADITIONAL ESD *system*

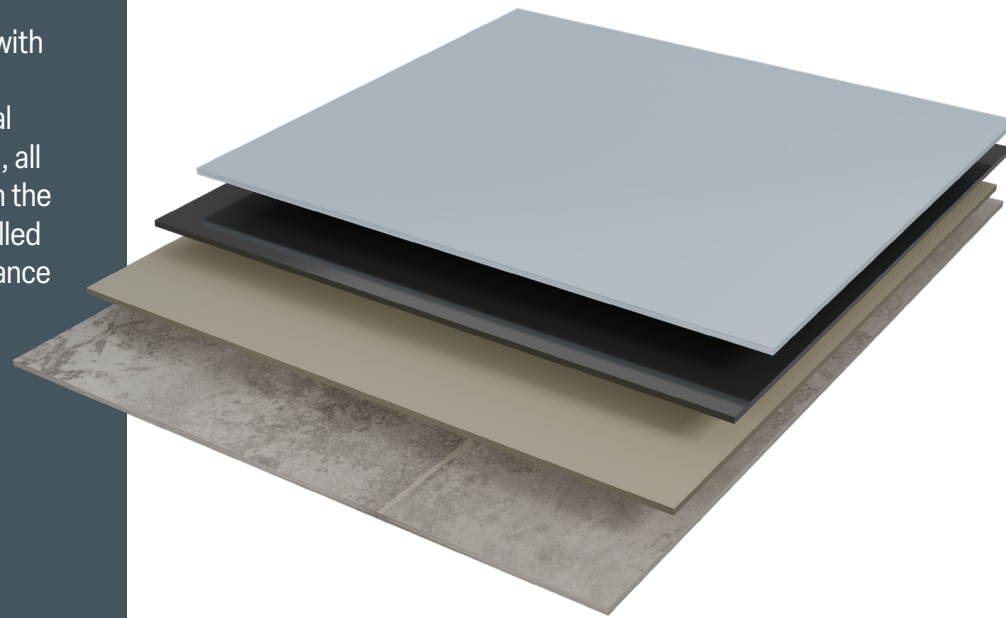


Shield employees, equipment, and processes against harmful ESD (electrostatic discharge) with **KRETUS® TRADITIONAL ESD**. This two-coat system protects against heavy traffic, chemical spills, moisture intrusion, and microbial growth, all while maintaining its ESD properties. Based on the underlying substrate treatment, it can be installed as a high-build system with no effect on resistance readings.

POPULAR COLORS



Colors shown are approximate.
More options available on page 16.

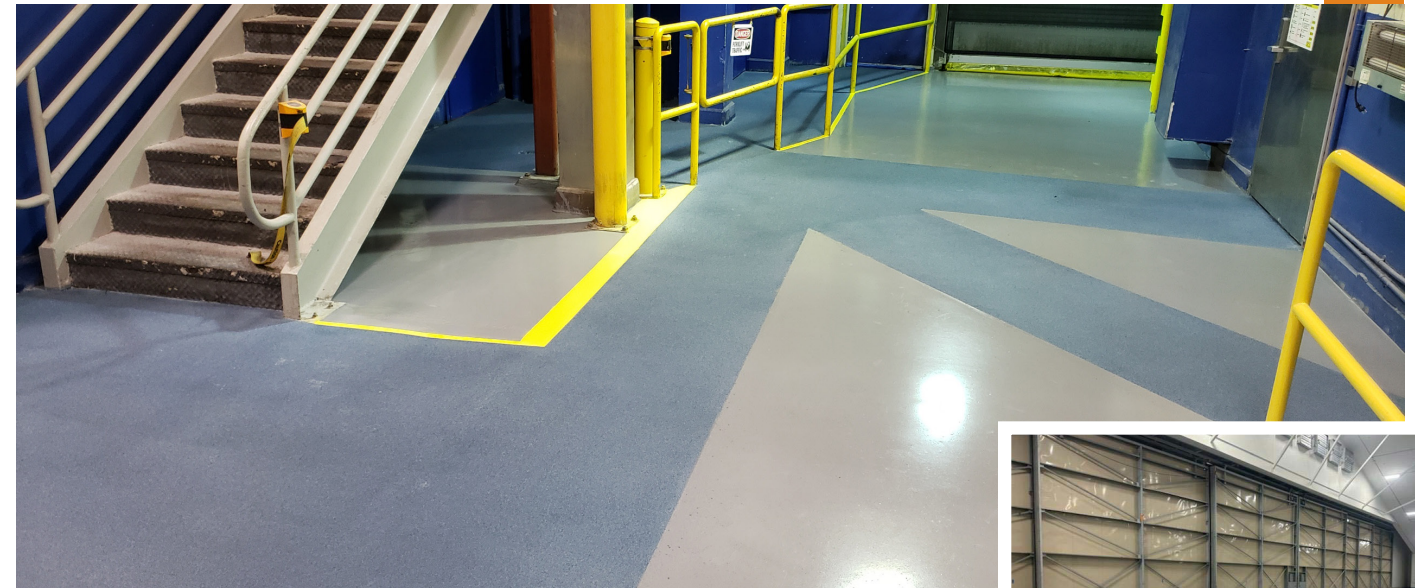


- 4 TRADITIONAL ESD TOP COAT
- 3 WB CONDUCTIVE PRIMER
- 2 OMG BLOCKER
- 1 PROPERLY PREPARED SUBSTRATE

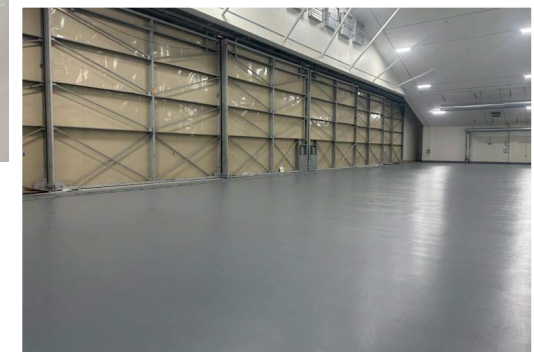
GREAT FOR

- ESD resistance: $>10^4$ to $<10^9$ ohms
- components sold separately for maximum flexibility
- eleven colors
- fast- or slow-cure top coat
- UV-resistant (Poly) or economical (Epoxy) options
- strong adhesion to epoxy, urethane cement, or sand

NANOTUBE ESD *system*

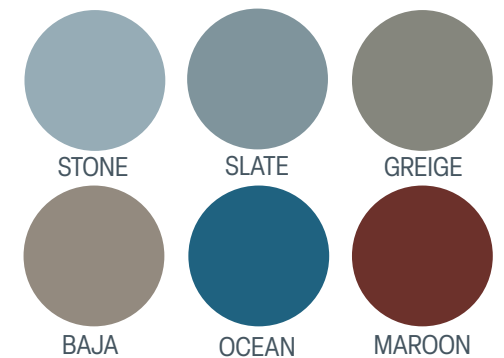


Get all the benefits of the traditional ESD system—and more—in a single application! **KRETUS® NANOTUBE ESD** incorporates carbon nanotube technology to enhance wear resistance and strengthen ESD control. Select the Epoxy for ease of installation or choose Poly for even better durability, wear resistance, and color stability.

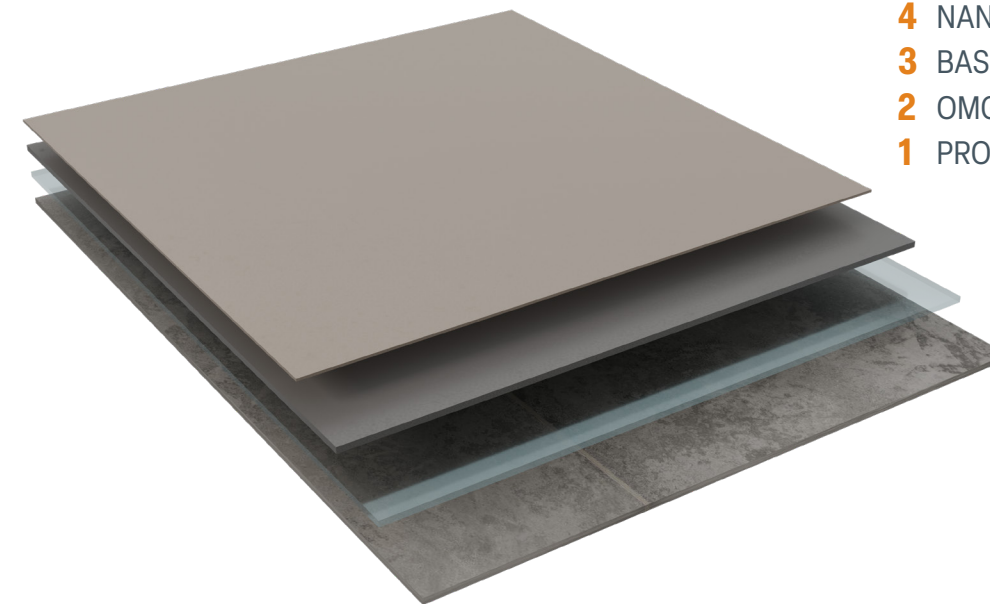


- 4 NANOTUBE ESD TOP COAT
- 3 BASE COAT
- 2 OMG BLOCKER
- 1 PROPERLY PREPARED SUBSTRATE

POPULAR COLORS



Colors shown are approximate.



GREAT FOR

- conductive: $>10^4$ to $<10^6$ ohms
- dissipative: $>10^6$ to $<10^9$ ohms
- components sold as a boxed kit for maximum control
- six colors
- UV-resistant (Poly) or economical (Epoxy) options
- strong adhesion to epoxy, urethane cement, or sand



kretus.com/
esd



kretus.com/
esd

WATERPROOFING AND CONCRETE OVERLAY

apc system

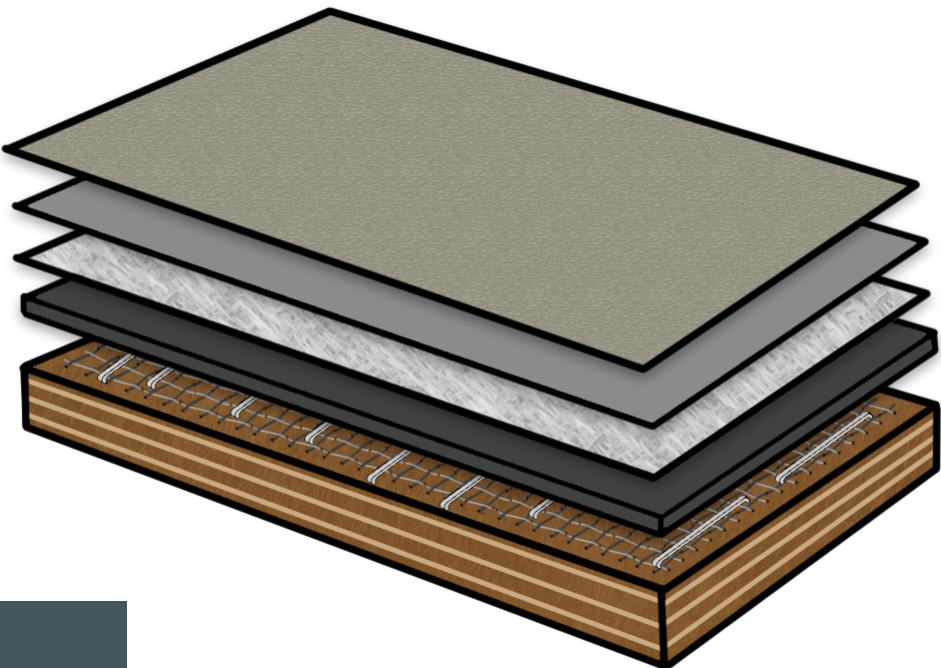


GREAT FOR

- patios
- sidewalks
- driveways
- walking decks
- podiums and balconies



Upgrade your outdoor spaces with beautiful and low-maintenance **KRETUS® WATERPROOFING AND CONCRETE OVERLAY APC SYSTEMS**. These systems use resilient Acrylic Polymer Concrete and Acrylic Sealer to create stunning textured finishes in a variety of long-lasting colors.



- 6 SEAL AND TEXTURE COAT
- 5 SCREED COAT
- 4 FIBERGLASS CHOPPED-STRAND MAT + BONDING RESIN
- 3 APC ACRYLIC ADMIX + BASECOAT
- 2 METAL LATH + STAPLES
- 1 PLYWOOD



Scan QR code for
ICC-ES Evaluation
Report No. ESR-4448

TRENDING COLORS



STORM



SAND



MUD PIE



SAHARA



EXECUTIVE GRAY



CHARCOAL



ADOBE



ARIZONA TAN

Colors shown are approximate. More options available on page 17.

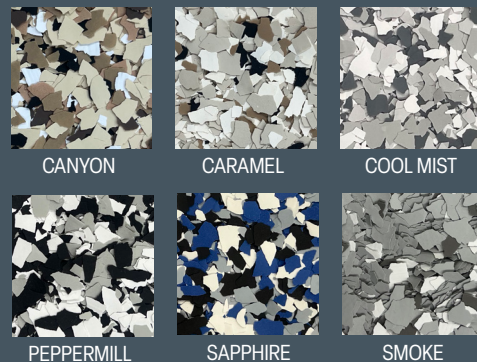


kretus.com/
waterproofing-and-
concrete-overlay-apc

COLOR CHART

all systems

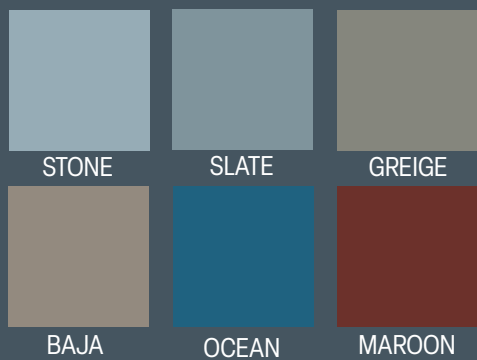
COLOR CHIP



COLOR QUARTZ



NANOTUBE ESD



METALLIC



TRADITIONAL ESD



INDUSTRIAL SAND, COLOR SPLASH & COVE EPOXY COLORS



COLOR SPLASH & WATERPROOF DECKING ACRYLIC COLORS



Colors shown in accent base.

INDUSTRIAL SAND & COLOR SPLASH UPC COLORS



kretus.com/
color-charts

TOP COAT

applications

KEY

NA = not applicable X = yes O = option available

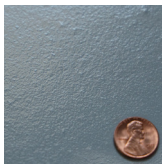
COMPARING TOP COATS

	Urethane Polymer Concrete	Polyurethane	Polyaspartic	Top Shelf® Epoxy	Hydrothane	Aliphatic MC	WB Acrylic Sealer	Nanotube Epoxy	Nanotube Poly
No to Low Odor	X	X		X	X		X	X	
Low to Fair Odor			X						X
Fair to High Odor						X			
UV Resistance	O	X	X		X	X	X		X
Industrial	X	X	X	X				X	X
Commercial	X	X	X	X	X	X	X		
Residential	X	X	X	X	X	X	X		
Gloss		O	X	O	O	O	O	X	X
Low Gloss	X	O		O	O	O	O		
Darkens Concrete	NA	X	X	X		X			
Color Chip		X	X	X					
Color Splash	X	X	X	X	X	X	X	X	X
Color Quartz		X	X	X	X				
Industrial Sand	X	X	X	X				X	X
Metallic		X	X	X	X	X			
APC (waterproofing)			X		X	X	X		

COMPARING TOP COAT TEXTURES

	ANTI-SLIP							SAND	
	AO 220	AO 120	AO36	Tex 50	Bead 100	Bead 50	Bead 20/30	30	20
Industrial	X	X	X	X	X	X	X	X	X
Commercial	X	X		X	X	X	X		
Residential				X	X	X	X	X	
Color Chip				X	X	X	X		
Color Splash	X	X		X	X	X			
Color Quartz	X	X		X	X	X	X		
Industrial Sand	X	X		X	X	X	X	X	X
ESD					X	X	X		
Metallic	X			X	X	X			
Waterproofing			X	X	X	X	X	X	X

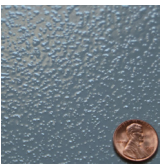
KRETUS® ANTI-SLIP and other surface texture granules increase abrasion and skid resistance and may be incorporated into any KRETUS® System. To ensure desired skid resistance is achieved, test products and systems on site within application area.



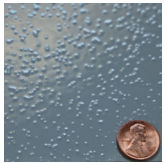
ANTI-SLIP AO 220



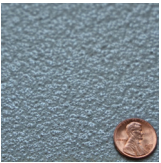
ANTI-SLIP AO 120



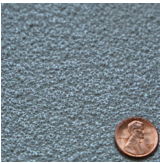
ANTI-SLIP AO 80



ANTI-SLIP AO 60



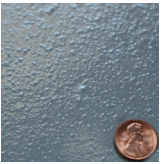
ANTI-SLIP AO 36



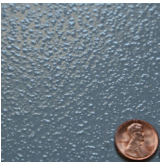
ANTI-SLIP AO 24



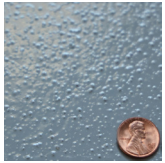
ANTI-SLIP BEAD 100



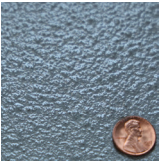
ANTI-SLIP BEAD 50/100



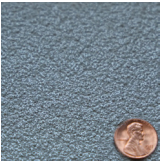
ANTI-SLIP BEAD 50



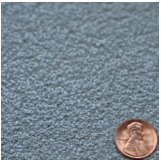
ANTI-SLIP BEAD 20/30



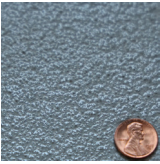
SAND 60



SAND 30



SAND 20



40-S



TEX 50



kretus.com/
anti-slip

KRĒTUS

systems



GENERAL QUESTIONS

714.694.2061 | info@kretus.com

TECHNICAL QUESTIONS

Michael Mulnix

Sr. Technical Product Manager, Western Territories, USA
916.757.4075 | michael@kretus.com

Samet Dy

Sr. Technical Product Manager, Eastern Territories, USA
860.480.7980 | samet@kretus.com

Jaime Monarres

Sr. Technical Product Manager, Se habla Español
424.348.5127 | jaime@kretus.com

Ian Taubler

Sr. Technical Product Manager, Western Territories, USA
559.709.8480 | ian@kretus.com

Andrew Voss

Sr. Technical Product Manager & Training Manager
920.254.2890 | andrew@kretus.com

