



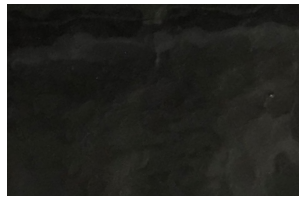
## Color Chart

THOUGHTFULLY DESIGNED COATINGS

### METALLIC



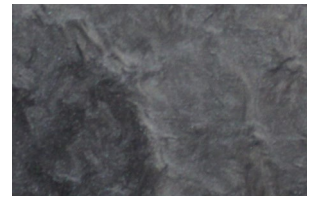
IVORY\*



CARBON



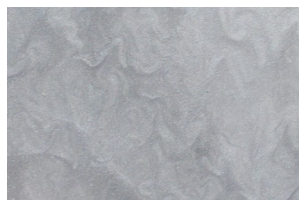
BLACK



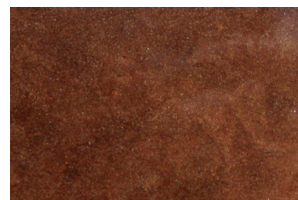
ANTIQUE SILVER



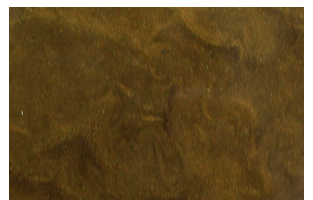
DARK GRAY



STERLING



CHERRYWOOD



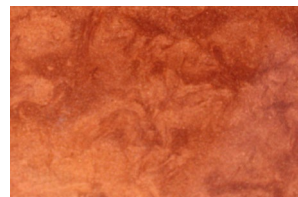
SUNSET GOLD



CALIFORNIA GOLD



NEW COPPER



SEDONA



CABERNET



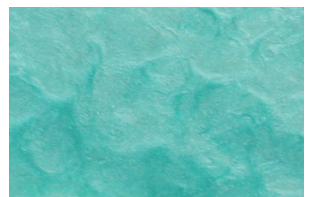
VIOLET



OLIVE



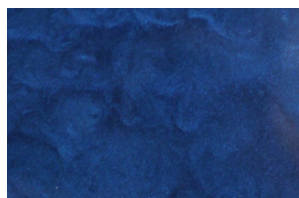
FOREST GREEN



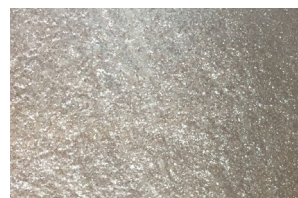
JADE GREEN\*



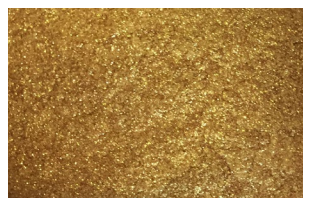
SKY BLUE



DARK BLUE



SILVER GLITTER\*



GOLD GLITTER\*

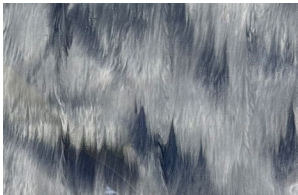
**BEST PRACTICES**

THOUGHTFULLY DESIGNED COATINGS

- **Appearance:** Colors are approximate. Final look may vary based on product, substrate, mix ratio, technique, climate, and location.
- **Batching:** Use the same batch number for consistent color. If batches differ, mix them together until the color is uniform.
- **Testing:** Always test material in the application area before starting full installation.
- **Mixing:** Mix pigment thoroughly with Clear Part A until the color is uniform. Allow color to set for 30 minutes to 24 hours before adding other components. If using pre-pigmented Part A, mix Part A until uniform before combining.
- **Mix ratios:**

PRODUCT	KIT SIZE	PIGMENT PER KIT	LIGHT PIGMENT PER KIT (marked with *)
Polyaspartic 92 Low Odor (EZ or FC)	2 gal (1 gal A + 1 gal B)	4 oz	8 oz
Polyurethane HS (EZ or FC)	1.5 gal (1 gal A + 1/2 gal B)	4 oz	8 oz
Top Shelf® Epoxy (A-Resin + EZ, AP, or FC)	1.5 gal (1 gal A + 1/2 gal B)	4 oz	8 oz

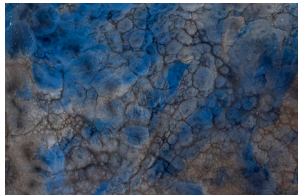
- **Pigment compatibility:** Metallic pigments can be combined with Top Shelf® Epoxy, Polyurethane HS, and Polyaspartic 92 Low Odor.
- **Application methods:** Final appearance depends on pigment amount, coating thickness, base coat and accent colors, and application technique. The examples below show how the same pigment can produce different effects using various methods:



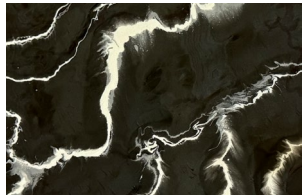
Back-Rolled Finish



Squeegee Finish



Acetone Spray Pattern



Leaf Blower Texture

- **Prime and base coats:** Choose colors that match or support the desired finish, as they can significantly affect the appearance, depth, and coverage of the metallic coat.
- **UV resistance:** For better color stability, use a clear, UV-resistant top coat like Polyaspartic or Polyurethane.
- **For custom color:** Complete the Special Order Form ([kretus.com/special-order-form](https://kretus.com/special-order-form)). Additional fees and lead times apply.

Disclaimer: This document is intended for Kretus-trained professionals. It is not legally binding and does not remove the user's or specifier's responsibility to ensure materials are used appropriately for the project and jobsite. Always follow the most current industry standards and Kretus technical guidelines. **Note:** Subject to change without notice. For the latest version, visit [kretus.com](https://kretus.com).