

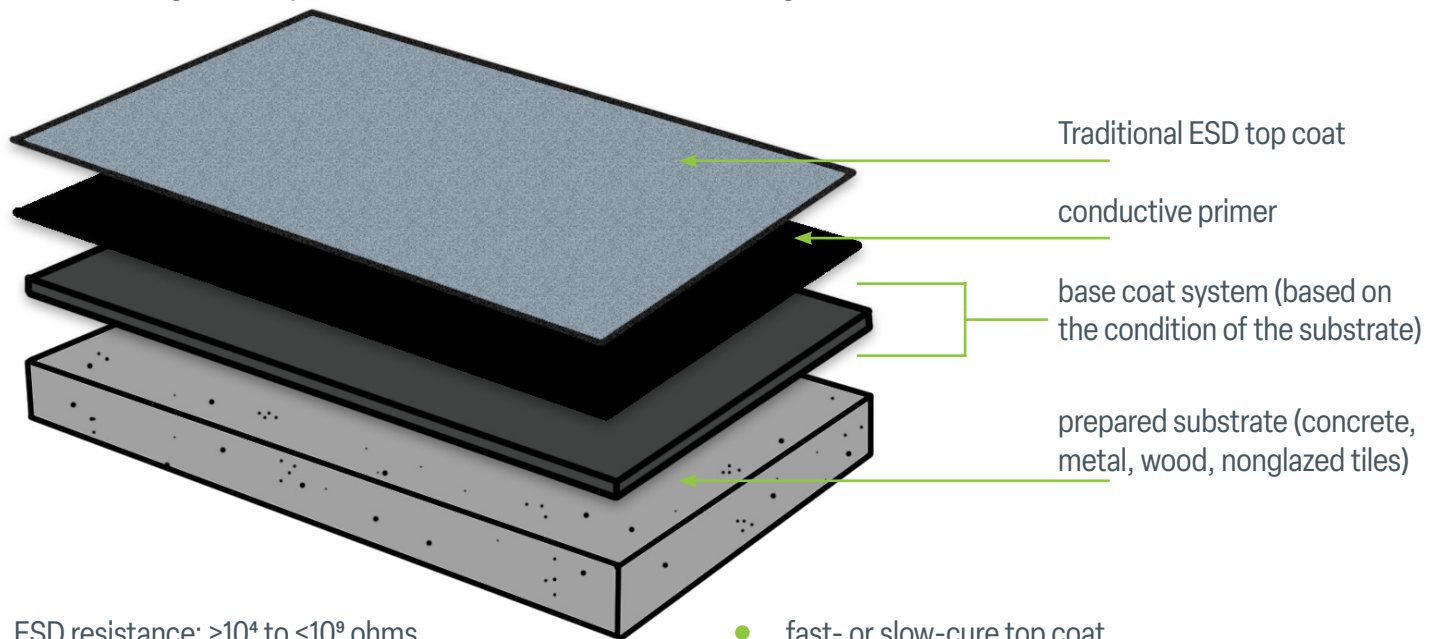


# ESD SYSTEMS

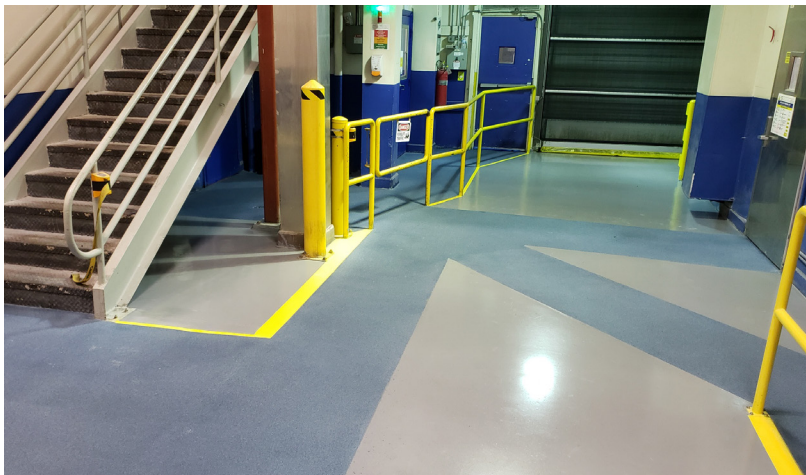
*Take Control of Static*

## TRADITIONAL ESD *systems*

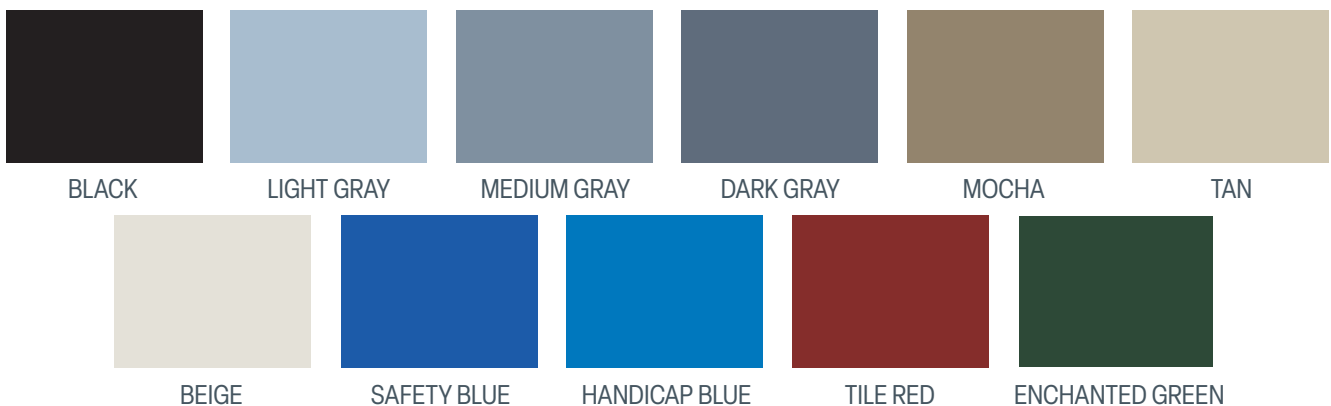
Shield employees, equipment, and processes against harmful ESD (electrostatic discharge) with **KRETUS®** **TRADITIONAL ESD**. This two-coat system protects against heavy traffic, chemical spills, moisture intrusion, and microbial growth, all while maintaining its ESD properties. Based on the underlying substrate treatment, it can be installed as a high-build system with no effect on resistance readings.



- ESD resistance:  $>10^4$  to  $<10^9$  ohms
- components sold separately for maximum flexibility
- eleven colors
- fast- or slow-cure top coat
- UV-resistant (Poly) or economical (Epoxy) options
- strong adhesion to epoxy, urethane cement, and sand



### COLOR CHART



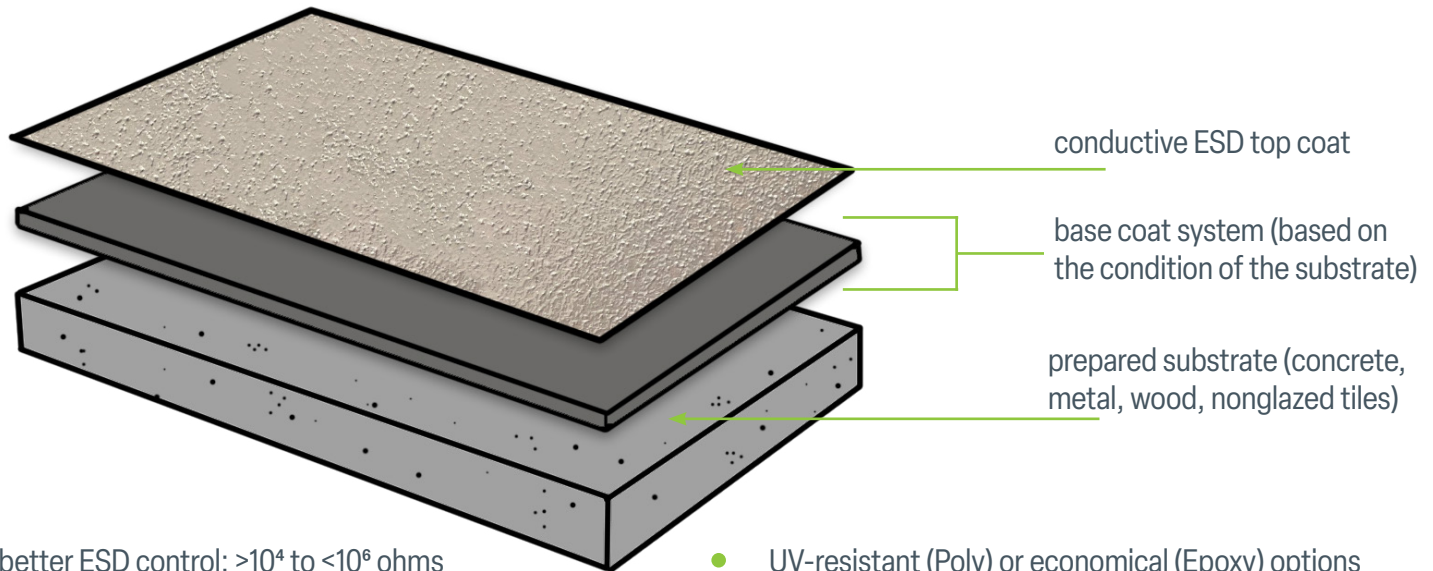
Colors shown are approximate.



# NANOTUBE ESD *systems*

Get all the benefits of the Traditional ESD system—and more—in a single application! **KRETUS® NANOTUBE ESD** incorporates carbon nanotube technology to enhance wear resistance and strengthen ESD control. Choose the Select ESD Epoxy for ease of installation or opt for Select ESD Poly for even better durability, wear resistance, and color stability.

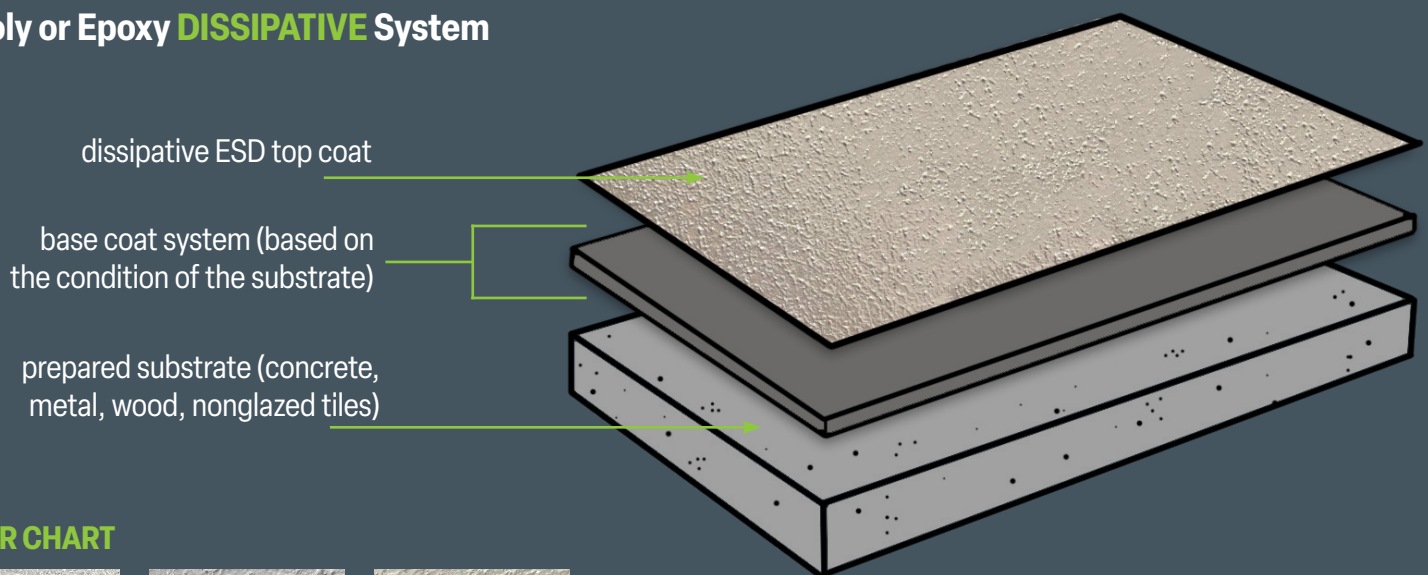
## Poly or Epoxy CONDUCTIVE System



- better ESD control:  $>10^4$  to  $<10^6$  ohms
- components sold as a boxed kit for easy application
- six colors

- UV-resistant (Poly) or economical (Epoxy) options
- strong adhesion to epoxy, urethane cement, and sand

## Poly or Epoxy DISSIPATIVE System



### COLOR CHART



Colors shown are approximate.

- better ESD control:  $>10^6$  to  $<10^9$  ohms
- components sold as a boxed kit for easy application
- six colors
- UV-resistant (Poly) or economical (Epoxy) options
- strong adhesion to epoxy, urethane cement, and sand

# THOUGHTFULLY DESIGNED COATINGS



Our adaptable coatings give skilled contractors the ability to meet client's needs under ever-changing environments, budgets, and deadlines.

## Hygienic Walls, Floors & Ceilings For

- Employee Service Facilities
- Freezer & Cold Storage
- Loading Docks
- Maintenance Areas
- Production Floors
- Test Kitchens
- Warehousing
- Wastewater Treatment

## Decorative and Functional Systems

- Color Chip
- Color Quartz
- Color Splash
- concrete priming, polishing, and patching
- crack and joint repair
- EcoMagnetic™
- ESD (Static Control)
- Industrial Sand
- moisture mitigation
- Terrazzo
- Top Shelf® Metallic

## Water- and Solvent-based Coatings

- Acrylic Polymer Concrete
- Acrylic Sealers
- Aliphatic MC
- EcoMagnetic™
- Hydrothane
- Polyaspartic\*
- Polyurethane\*
- Top Shelf® Epoxy\*
- Urethane Polymer Concrete\*
- WB Epoxy\*

\*modular product lines have mix-and-match components



Scan code for  
[kretus.com/esd](http://kretus.com/esd)

General Questions | 714.694.2061 | [info@kretus.com](mailto:info@kretus.com)

Technical Questions | Samet Dy - 860.480.7978 - [samet@kretus.com](mailto:samet@kretus.com) | Michael Mulnix - 916.757.4075 - [michael@kretus.com](mailto:michael@kretus.com)